



Fire Hydrant - 3 Nozzle Cast or Ductile Iron

Form 12740 - 4/13

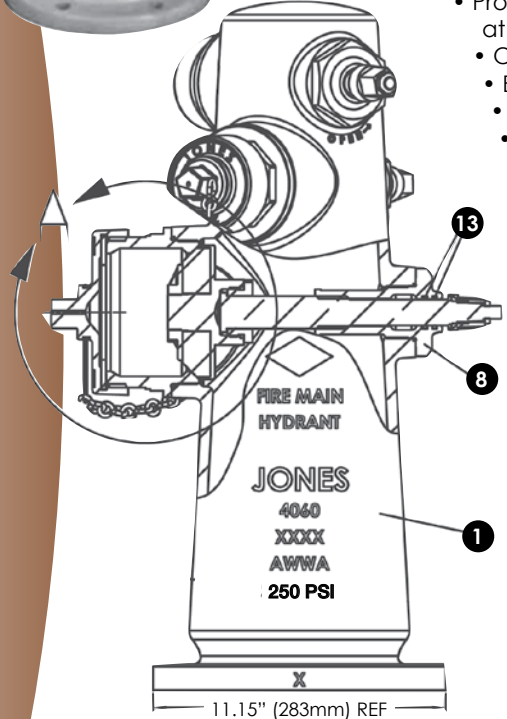


Hydrant Description

PART #	NOZZLE CONFIG.	FLANGE PATTERN
J4060AR	4 1/2" x 2 1/2" x 2 1/2"	6 - 3/4" (19mm) Holes, 9 3/8" (238mm) DBC
J4060BR	4" x 2 1/2" x 2 1/2"	8 - 7/8" (22mm) Holes, 9 1/2" (241mm) DBC
J4060CR	4" x 2 1/2" x 2 1/2"	6 - 7/8" (22mm) Holes, 9 1/2" (241mm) DBC
J4060DR	4" x 2 1/2" x 2 1/2"	6 - 3/4" (19mm) Holes, 9 3/8" (238mm) DBC
J4060ER	4 1/2" x 2 1/2" x 2 1/2"	8 - 7/8" (22mm) Holes, 9 1/2" (241mm) DBC

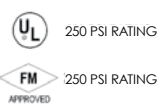
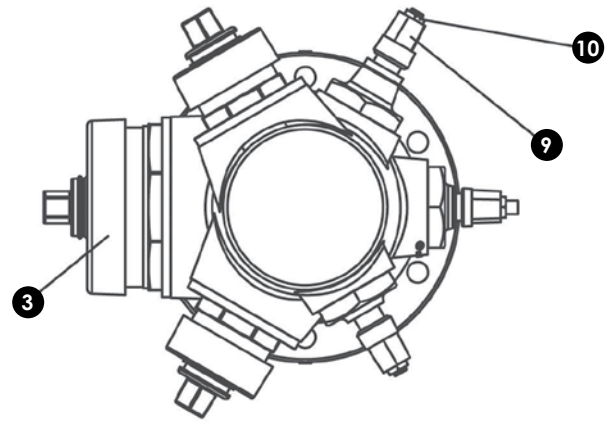
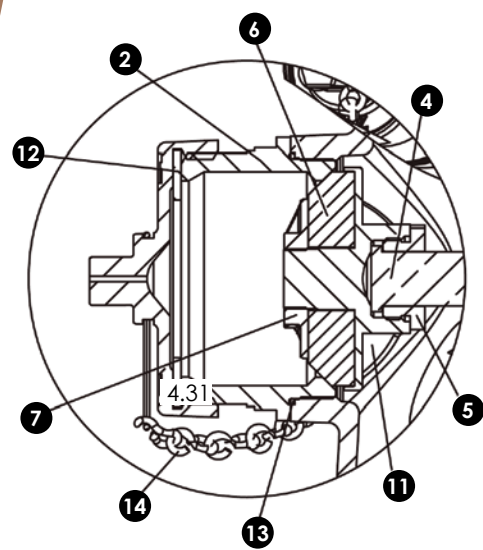
Product Features

- Meets or Exceeds ANSI/AWWA C503
- Individual Stem Operation
- Limited Number of Internal Parts
- Nozzle Threads Conform to NFPA 1963, NH/NST
- Removable Nozzle Design
- Available in a Variety of Bolt Hole Patterns
- Low Zinc Silicon Bronze Stems
- Heavy Duty Disc Holder
- Product Rated up to 250 PSI (1723 kPa), Hydrostatically Tested at 500 PSI (3447 kPa)
- O-Ring Construction in Stem Insert
- Epoxy Coated Interior Meets AWWA C550 and NSF 61
- Plastic Caps Available
- 10-year Limited Warranty
- 5" Storz Pumper Nozzle Available



Parts List

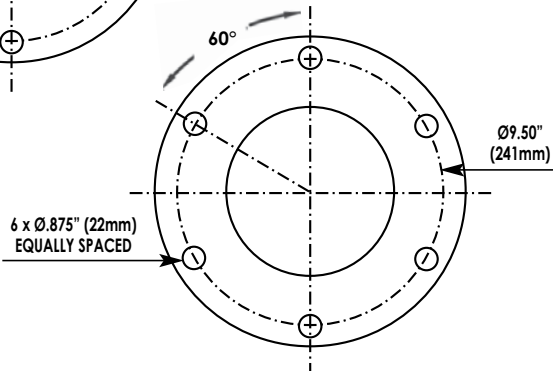
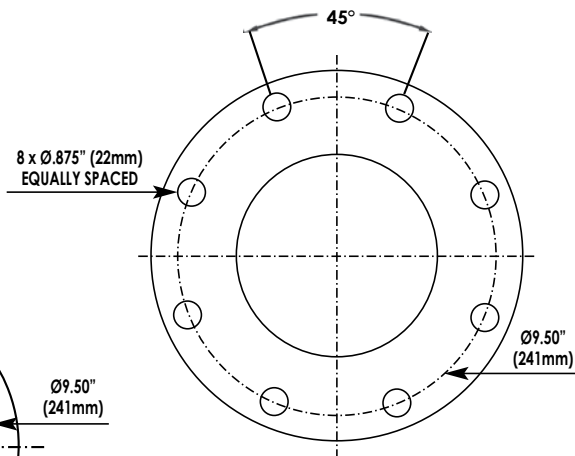
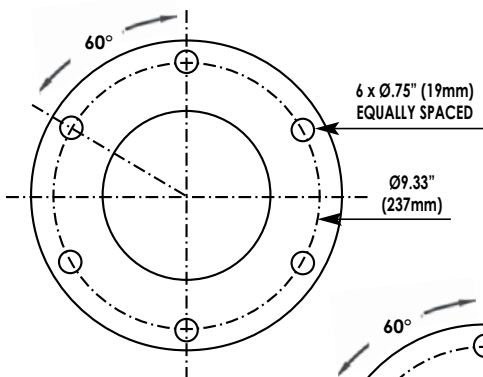
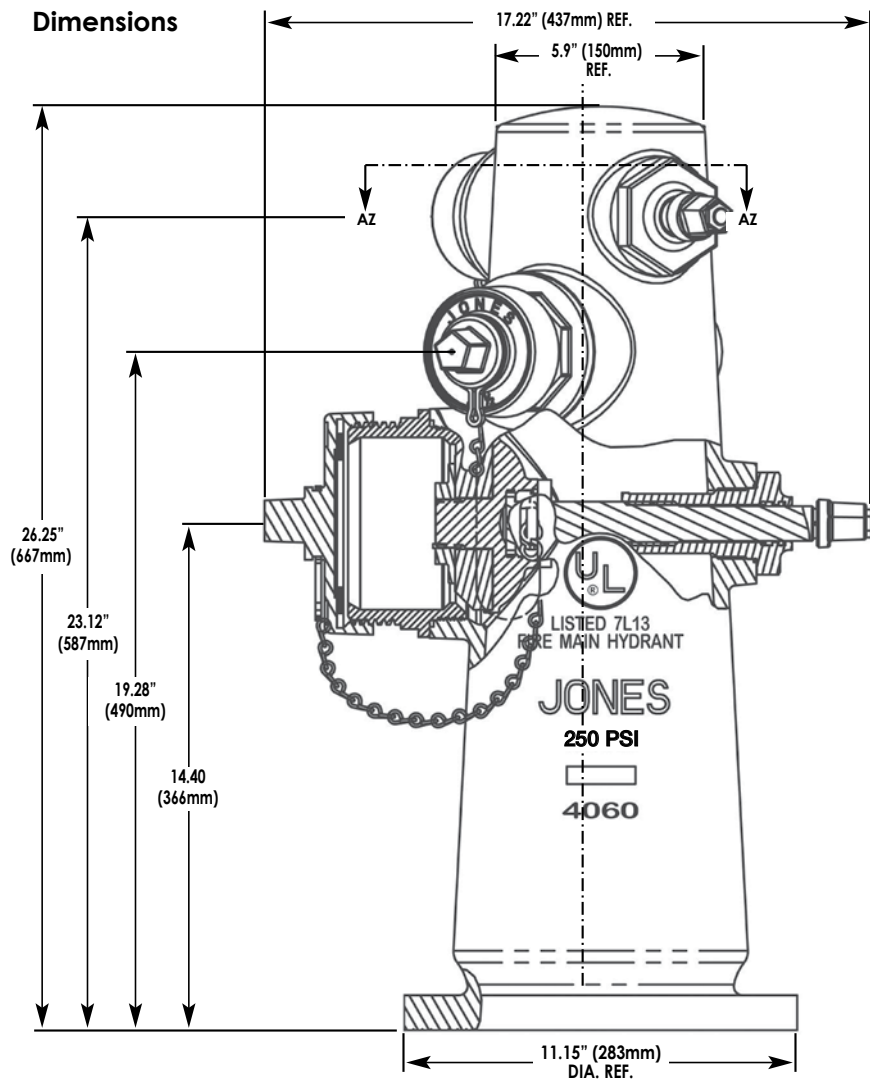
ID	PART NAME	MATERIAL
1	Hydrant Body	Cast or Ductile Iron
2	Nozzle Insets	Copper Alloy UNS C83600
3	Hose Caps	Cast Iron
4	Hydrant Stem	Silicon Bronze
5	Stem Locknut	Copper Alloy UNS C83600
6	Beveled Hydrant Disc	BUNA-N
7	Hydrant Disc Locknut	Copper Alloy UNS C83600
8	Stem Insert	Copper Alloy UNS C83600
9	Pent Nut	Copper Alloy UNS C83600
10	Pent Nut Retainer	Copper Alloy UNS C83600
11	Hydrant Disc Holder	Copper Alloy UNS C83600
12	Nozzle Gasket	Neoprene
13	O-Rings	BUNA-N
14	Chain	Zinc Coated Steel



INTERNATIONAL DIVISION



Fire Hydrant - 3 Nozzle Cast or Ductile Iron



INTERNATIONAL DIVISION